

MONUMENT SCHEDULE		
NUMBER	COORDINATE	
1	N-1188,686.00	E-403,394.28
2	N-1189,304.00	E-387,000.34
3	N-1188,750.00	E-388,870.00
4	N-1190,000.00	E-388,870.00
5	N-1190,000.00	E-387,812.00
6	N-1193,047.50	E-387,812.00
7	N-1194,813.20	E-387,165.00
8	N-1200,950.00	E-387,165.00
9	N-1200,950.00	E-391,500.00
10	N-1200,000.00	E-392,748.57
11	N-1199,900.00	E-392,880.00
12	N-1199,900.00	E-393,980.00
13	OMITTED	
14	N-1199,029.20	E-402,302.92
15	N-1194,100.00	E-404,831.00
16	N-1190,700.00	E-388,870.00
17	N-1190,700.00	E-400,000.00
18	N-1198,500.00	E-388,870.00
19	N-1199,428.26	E-393,500.00
20	N-1198,600.00	E-394,588.57
21	N-1198,600.00	E-400,456.00
22	N-1197,636.80	E-395,791.40
23	N-1197,400.00	E-396,100.00
24	N-1197,400.00	E-401,325.00
25	N-1199,730.17	E-393,980.00
26	N-1199,900.00	E-394,250.00
27	N-1189,975.00	E-392,000.00
28	N-1189,975.00	E-400,230.00
29	N-1190,900.00	E-400,230.00
30	N-1190,900.00	E-392,000.00
31	N-1188,650.00	E-393,500.00
32	N-1199,900.00	E-398,700.00
33	N-1198,500.00	E-402,000.00

- NOTES:**
- Contours shown are from Aerial Photograph by International Aerial Mapping Co. (Nov.21,1971) based on U.S.C.G.S. Bench Marks Q-66,R-66,D-10,"Parrish" & "Gillette".
 - Clearing & Grubbing operations will be under separate contract see specification.
 - The Contractor shall schedule his operations with regard for the clearing & grubbing priorities stated in the specifications, and shall conform to the time sequences and dates shown on these drawings and in the specifications.
 - Elevations shown for Mandatory Cut are the required elevation for final grading. For Borrow Areas see specifications, & section on Dwg.204-2.

NOTE
 SHOW ON THIS DWG ARE
 ELEVATIONS BASED ON U.S.C.G.
 MEAN SEA LEVEL DATUM.
 VALLEY UNIT NO. 1 & NO. 2 EL.100.00
 E. EL. OF 55.0'

NO.	DATE	REVISION	BY	CHK.	APP.
1	10-24-75	As Sh.	J.H.		
2	3-4-79	Rev. Top of Conservation & Deleted Alternate B	AWB	SS	CF
3	1-29-79	Rev. Property Lines, Mandatory Cut & Added Bench Marks & Gaging Station.	J.H.	XDG	CF

DRAWN JOHN HOWARD
CHECKED K Gregory
APPROVED Cal Fick
CUSTOMER APP.

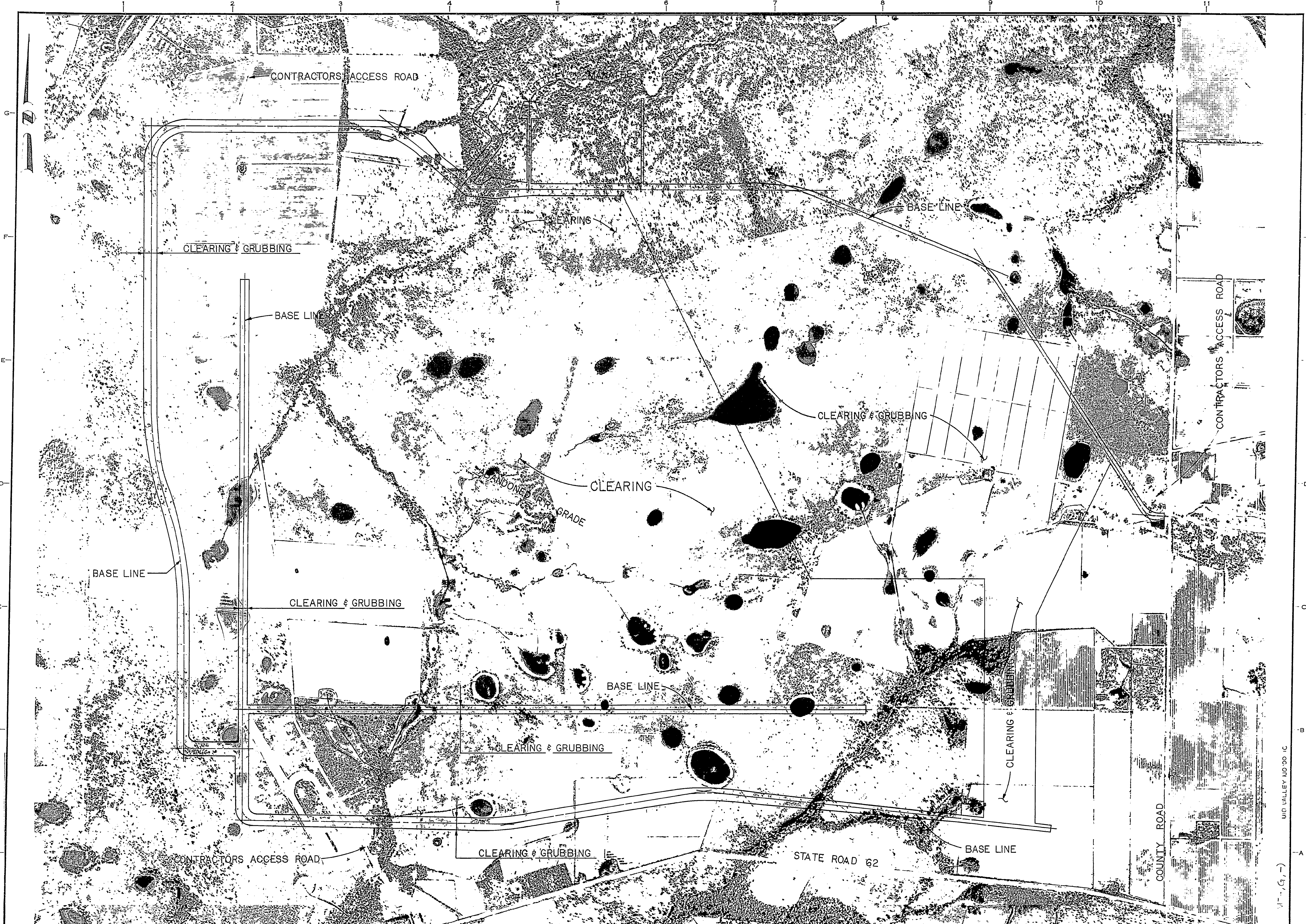


MID-VALLEY, INC.
 ENGINEERS - CONSTRUCTORS.
 HOUSTON, TEXAS

FLORIDA POWER & LIGHT COMPANY
 MIAMI, FLORIDA
 MANATEE PLANT
 UNIT NO. 1-1975 862 MW INSTALLATION
 UNIT NO. 2-1976 862 MW INSTALLATION


DRAWING TITLE
 COOLING WATER RESERVOIR
 GENERAL
 RESERVOIR LAYOUT

CONTRACT NO. ER-0608
DATE: 11-9-72
SCALE: 1"=600'
 0608-C-101-5-4



NO.	DATE	REVISION	BY	CHK.	APP.

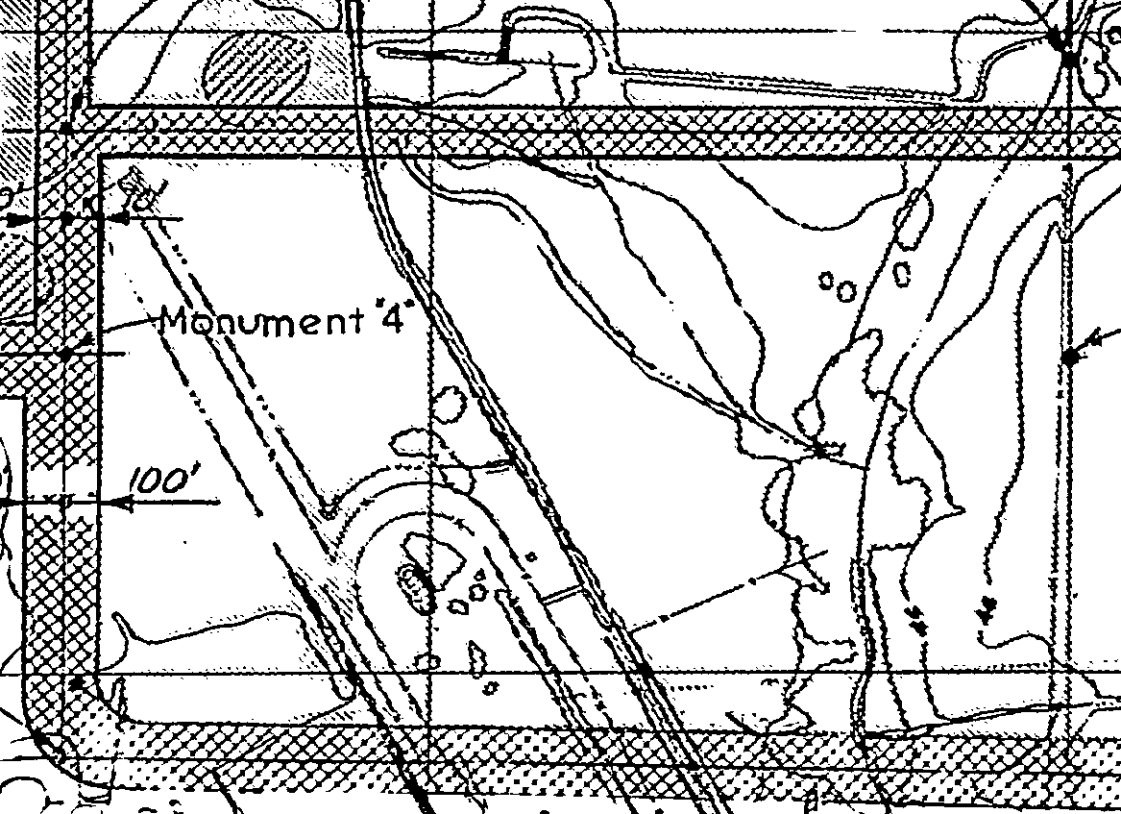
DRAWN	JOHN HOWARD
CHECKED	K. Gregory
APPROVED	Carl Lick
CUSTOMER APP.	



MID-VALLEY, INC.
ENGINEERS - CONSTRUCTORS
HOUSTON, TEXAS

FLORIDA POWER & LIGHT COMPANY
MIAMI, FLORIDA
MANATEE PLANT
UNIT NO. 1—1975 862 MW INSTALLATION
UNIT NO. 2—1976 862 MW INSTALLATION

DRAWING TITLE	CONTRACT NO.	DATE: 10-24-72
COOLING WATER RESERVOIR	ER-0608	SCALE: 1"=600'
CLEARING & GRUBBING		
SITE AERIAL PHOTOGRAPH		



Monument '4'

100'

2'



- NOTES:**
1. First Priority - That Area West of Coordinate E-390,000 and North of Coordinate N-1189,000.
 2. Second Priority - That Remaining Area West of Coordinate E-396,000 and North of Coordinate N-1191,000.
 3. Third Priority - That Remaining Area West of Coordinate E-400,000, North of Coordinate N-1190,000 and South of Coordinate N-1192,000.
 4. Fourth Priority - That Remaining Area West of Coordinate E-396,000 and North of Coordinate N-1192,000.
 5. Fifth Priority - That Remaining Area North of Coordinate N-1190,000.
 6. Sixth Priority - All Remaining Areas.
6. The Contractor shall be responsible for the preservation and replacement (if necessary) of all monuments.

LEGEND

	Denotes Area to Be Cleared & Grubbed.
	Denotes Area to Be Cleared Only.

NO.	DATE	REVISION	BY	CHK.	APP.
D	8-24-75	As Built	JKA	CF	
A	02-27-78	Changed Limit of Clearing & Grubbing	JKA	CF	
A	11-10-78	Changed 1200' to 900' Clearing & Grubbing, E. Side Various Monuments 13	JKA	CF	
A	10-25-72	Revised Monument 14 & Clearing & Grubbing @ Spillway and Pumping Station, Added Monuments 21, 22, 23, 30, 31, 32, 33.	JKA	CF	

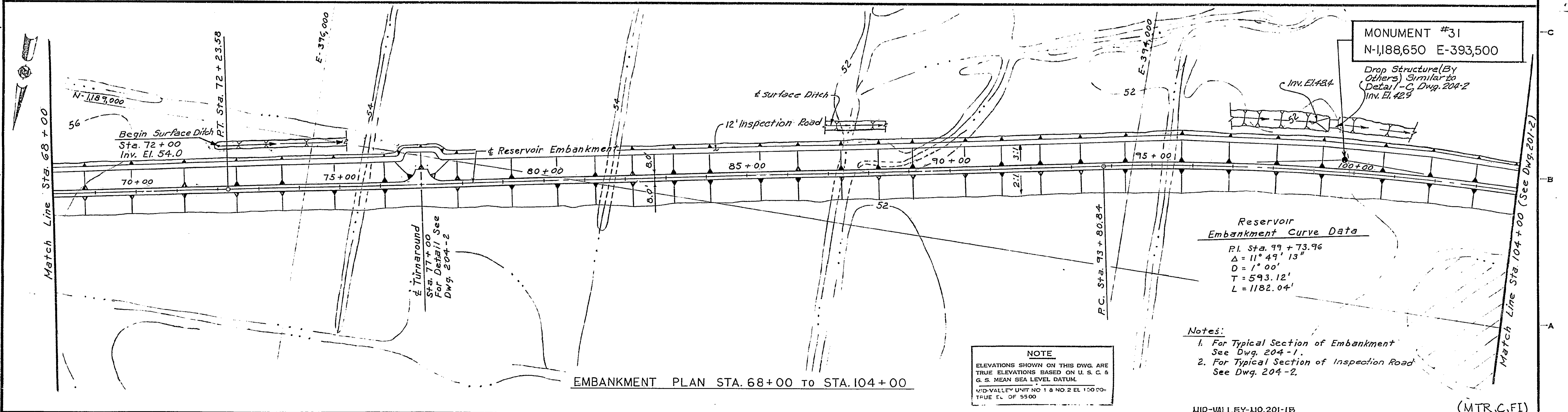
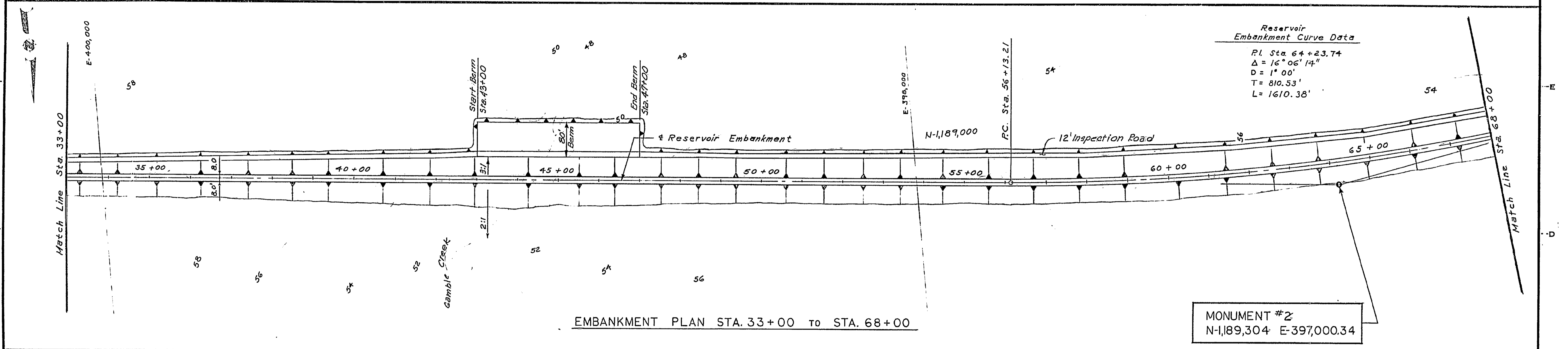
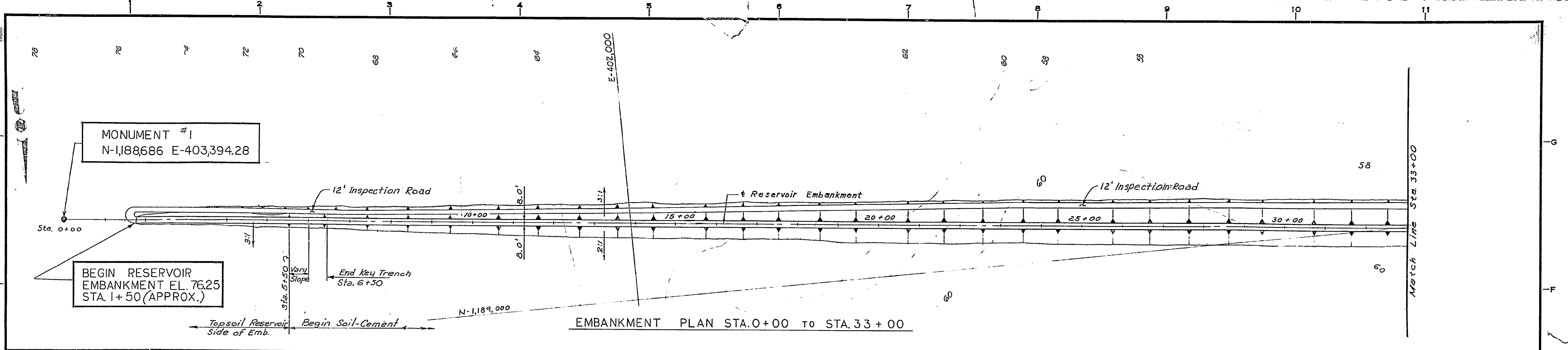
MID-VALLEY, INC.
ENGINEERS - CONSTRUCTORS
HOUSTON, TEXAS

DRAWN: John Koward
 CHECKED: Y. C. Chen
 APPROVED: Carl Fish
 CUSTOMER APP.

FLORIDA POWER & LIGHT COMPANY
 MIAMI, FLORIDA
 MANATEE PLANT
 UNIT NO. 1-1975 862 MW INSTALLATION
 UNIT NO. 2-1976 862 MW INSTALLATION

DRAWING TITLE
 COOLING WATER RESERVOIR
 CLEARING & GRUBBING
 VICINITY MAP & SITE LAYOUT

CONTRACT NO. ER-0608
 DATE: 9-22-72
 SCALE: 1"=600'
 0608-C-100-2-5



Reservoir Embankment Curve Data
 P.I. Sta. 64+23.74
 $\Delta = 16^\circ 06' 14''$
 $D = 1^\circ 00'$
 $T = 810.53'$
 $L = 1610.38'$

MONUMENT #2
 N-1,189,304 E-397,000.34

MONUMENT #31
 N-1,188,650 E-393,500
 Drop Structure (By Others) Similar to Detail - C, Dwg. 204-2
 Inv. El. 42.5

Reservoir Embankment Curve Data
 P.I. Sta. 99+73.96
 $\Delta = 11^\circ 49' 13''$
 $D = 1^\circ 00'$
 $T = 593.12'$
 $L = 1182.04'$

Notes:
 1. For Typical Section of Embankment See Dwg. 204-1.
 2. For Typical Section of Inspection Road See Dwg. 204-2.

NOTE
 ELEVATIONS SHOWN ON THIS DWG. ARE TRUE ELEVATIONS BASED ON U. S. C. & G. S. MEAN SEA LEVEL DATUM.
 MID-VALLEY UNIT NO. 1 & NO. 2 EL. 100' ± TRUE EL. OF 5500

NO.	DATE	REVISION
3		ASSIGNED FPL NO.
2	10/24/76	FP&L REVISION
1	3/11/76	As Built Deleted Alternate "B" & Rev. Beg. Station

DRAWN	J. Demby
CHECKED	K. Gregory
APPROVED	Carl Fick
CUSTOMER APP.	



MID-VALLEY, INC.
 ENGINEERS - CONSTRUCTORS
 HOUSTON, TEXAS

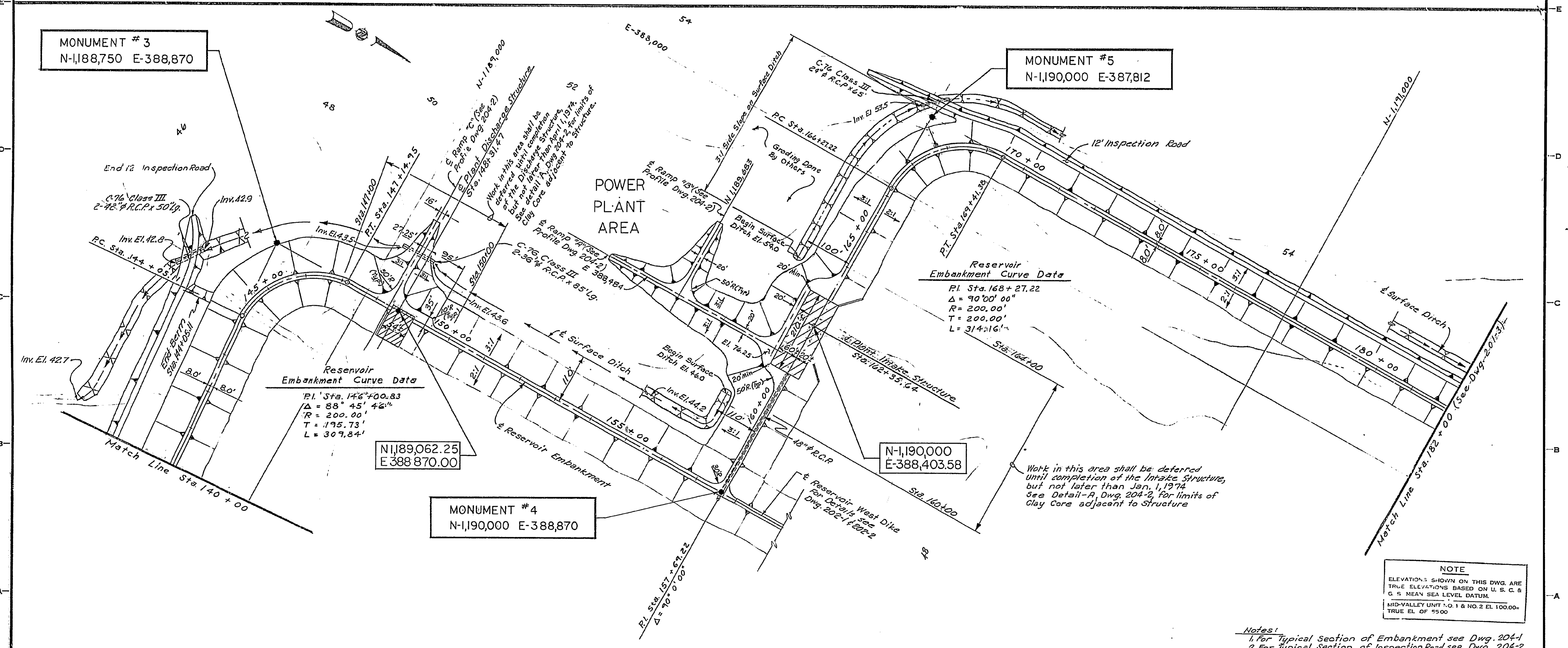
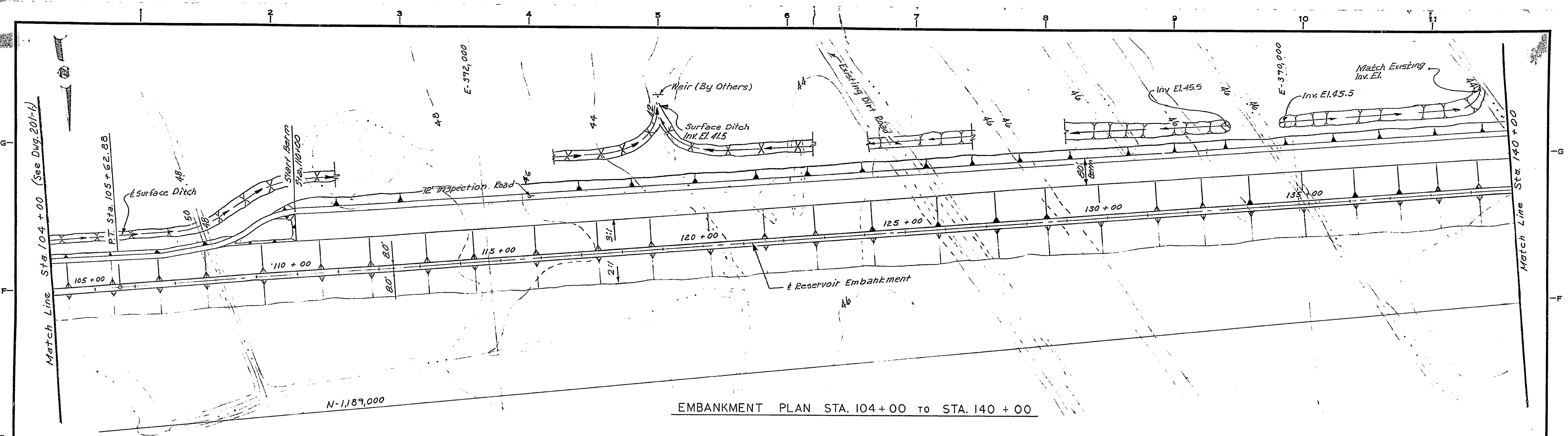
FLORIDA POWER & LIGHT COMPANY
 MIAMI, FLORIDA
 MANATEE PLANT
 UNIT NO. 1-1975 862 MW INSTALLATION
 UNIT NO. 2-1976 862 MW INSTALLATION

DRAWING TITLE
 COOLING WATER RESERVOIR
 EMBANKMENT
 PLAN SHEET I

CONTRACT NO.
 ER-0608
 DATE: 11-9-72
 SCALE: 1" = 100'
 0608-C-201-3
 SH. 1 OF 5

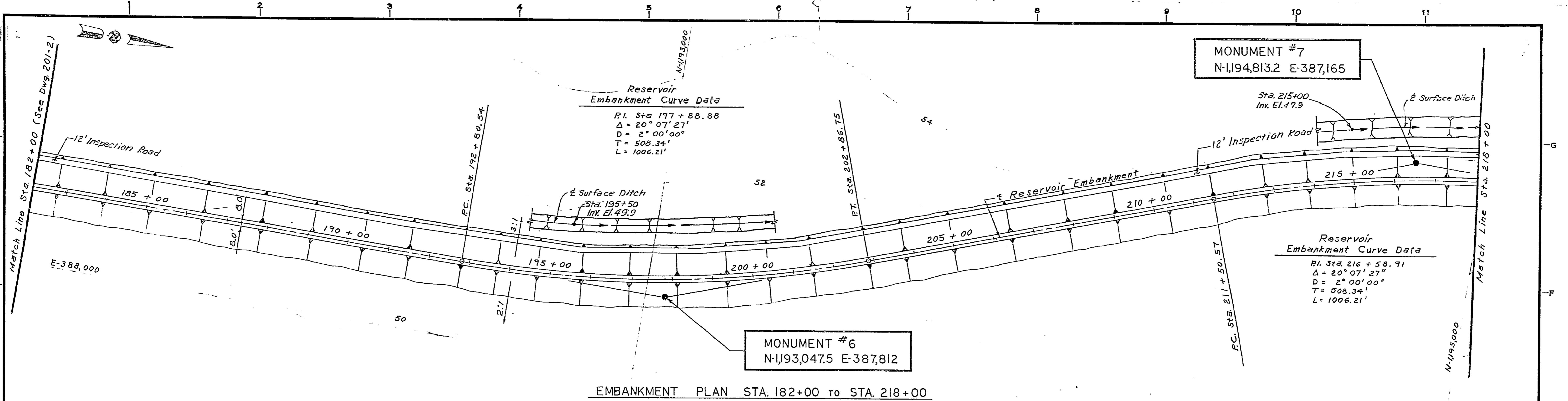
MID-VALLEY-UO.201-1B

(MTR, C, FI)

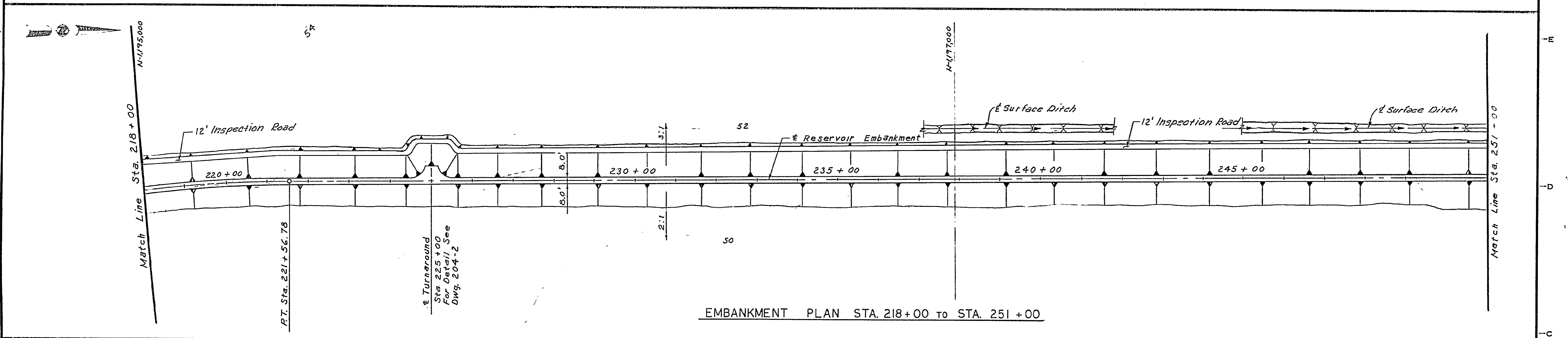


EMBankment Plan STA. 140+00 to STA. 182+00

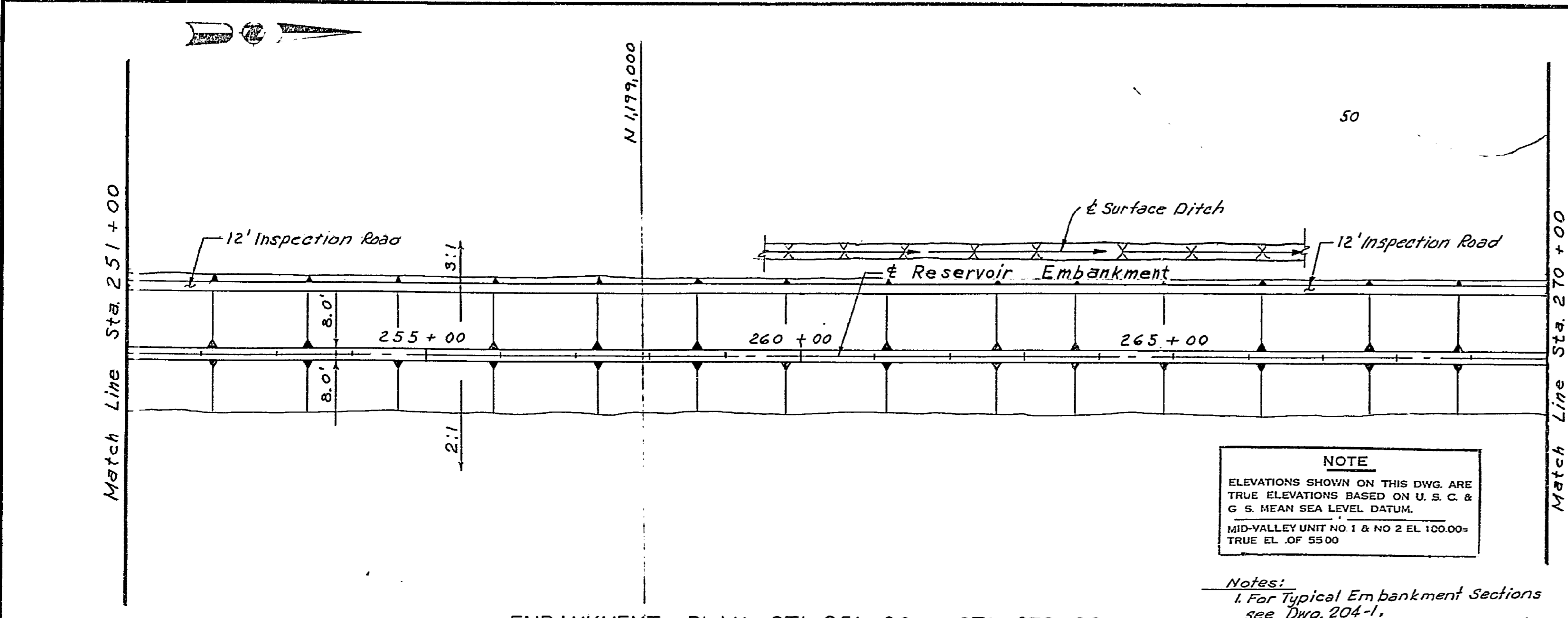
NO. DATE		REVISION				DRAWN J. Demby				CHECKED K. Gregory				APPROVED Carl Fick				CUSTOMER APP.			
4		ASSIGNED FP&L NO.				T.L.				MID-VALLEY, INC.				FLORIDA POWER & LIGHT COMPANY				DRAWING TITLE			
10-5-72		AS BUILT				BY				ENGINEERS - CONSTRUCTORS				MIAMI, FLORIDA				COOLING WATER RESERVOIR			
9		Ramp Location & Note on Ramp Profiles & Culverts				CHK				HOUSTON, TEXAS				MANATEE PLANT				EMBankment			
A		Rev. Ditch Invert Elevs, Slopes, Locations, Ramp & Culverts & Deleted Wirenote B				COR				MID-VALLEY UNIT NO. 1 & NO. 2				UNIT NO. 1-1975 862 MW INSTALLATION				PLAN SHEET 2			
3-1-73						APP				CONTRACT NO.				DATE: 11-9-72							
						BY				ER-0608				SCALE: 1"=100'							
						BY				0608-C-201-4				SHEET 2							



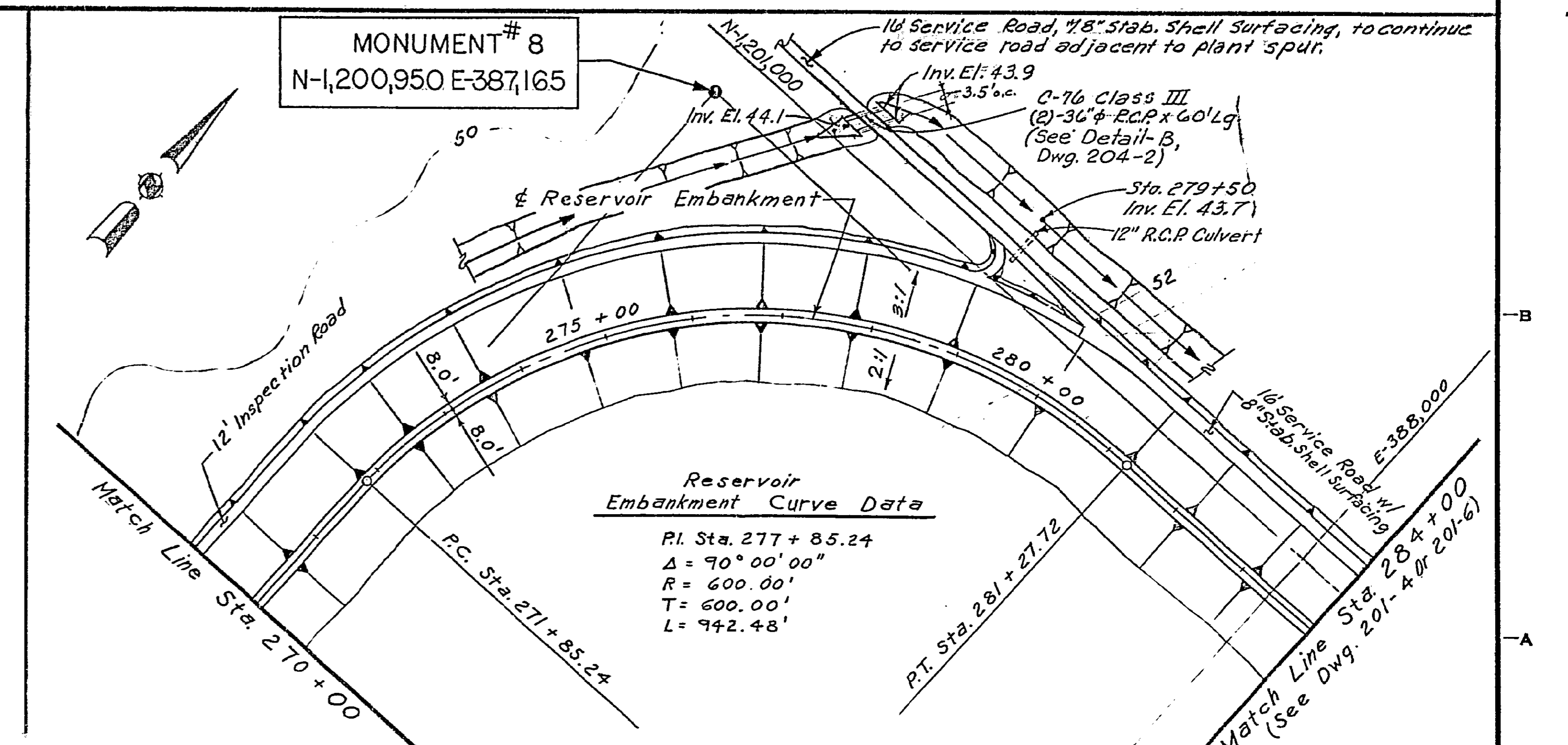
EMBANKMENT PLAN STA. 182+00 TO STA. 218+00



EMBANKMENT PLAN STA. 218+00 TO STA. 251+00



EMBANKMENT PLAN STA. 251+00 TO STA. 270+00



EMBANKMENT PLAN STA. 270+00 TO STA. 284+00

NOTE
ELEVATIONS SHOWN ON THIS DWG. ARE TRUE ELEVATIONS BASED ON U. S. C. & G. S. MEAN SEA LEVEL DATUM.
MID-VALLEY UNIT NO. 1 & NO. 2 EL. 100.00± TRUE EL. OF 5500

Notes:
1. For Typical Embankment Sections see Dwg. 204-1.
2. For Typical Section of Inspection & Service Road see Dwg. 204-2.

NO.	DATE	REVISION	BY	CHK.	APP.
3		ASSIGNED FP&L NO.			
2	08-24-75	As Built			
1	3-17-73	Revised ditch Inv. Elev. Deleted Alternate B, D, E, F, G, H, I, J, K, L, M, N, O, P, Q, R, S, T, U, V, W, X, Y, Z			

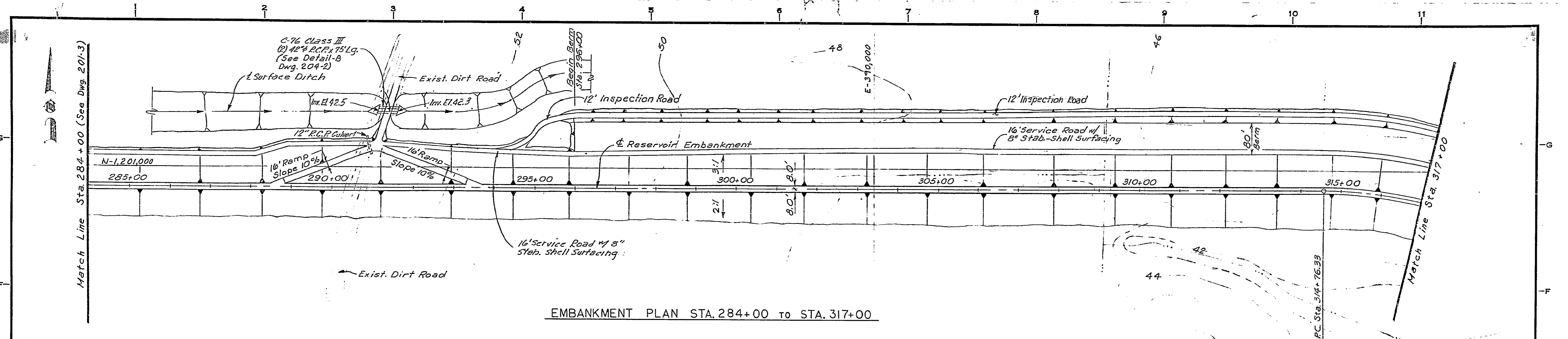
DRAWN J. Demby
CHECKED K. Greary
APPROVED Carl Fick
CUSTOMER APP.

MID-VALLEY, INC.
ENGINEERS - CONSTRUCTORS
HOUSTON, TEXAS

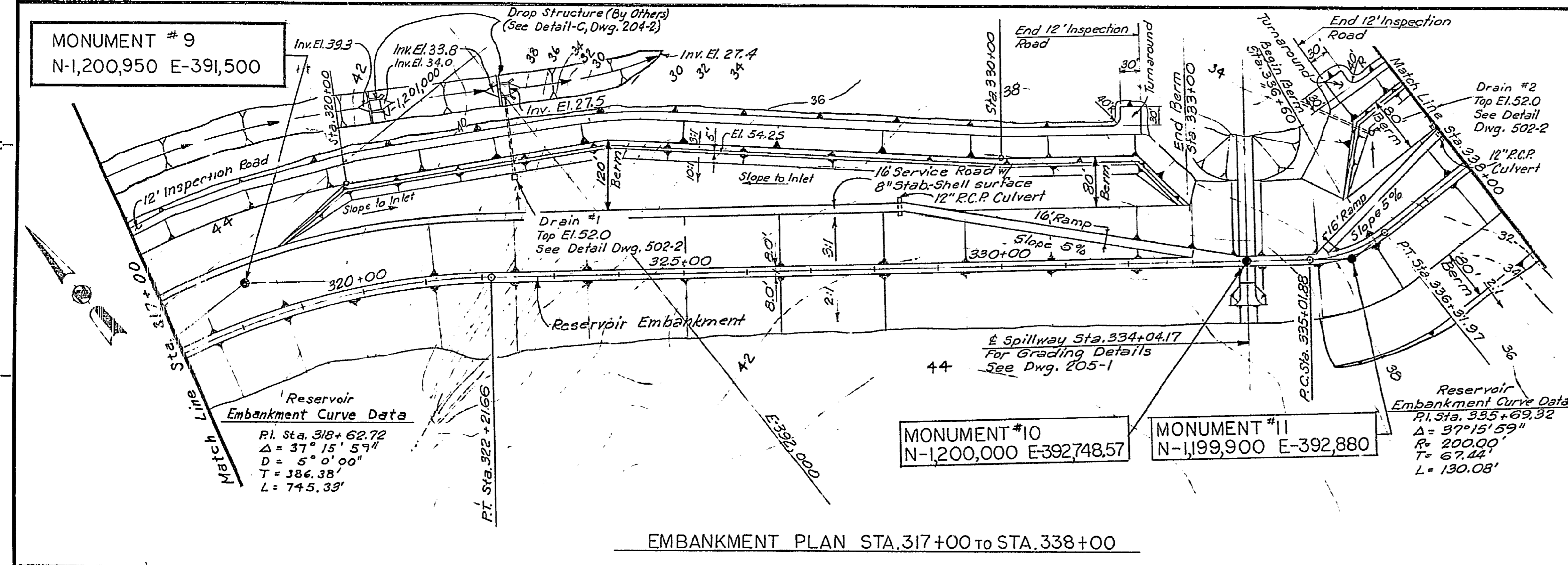
FLORIDA POWER & LIGHT COMPANY
MIAMI, FLORIDA
MANATEE PLANT
UNIT NO. 1—1975 862 MW INSTALLATION
UNIT NO. 2—1976 862 MW INSTALLATION

DRAWING TITLE
COOLING WATER RESERVOIR
EMBANKMENT
PLAN SHEET 3

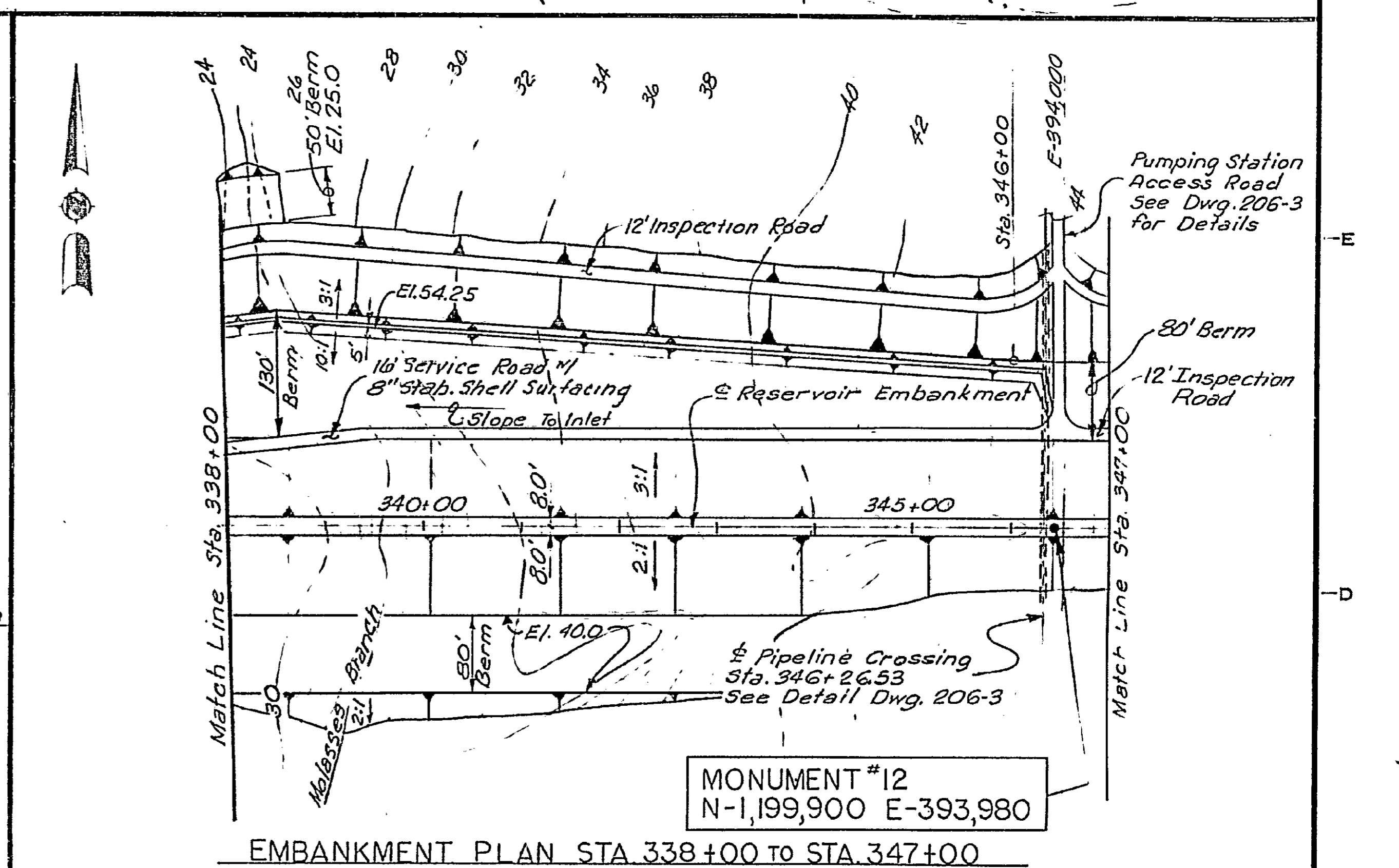
CONTRACT NO. ER-0608
DATE: 11-9-72
SCALE: 1"=100'
0608-C-201-3
SH. 3



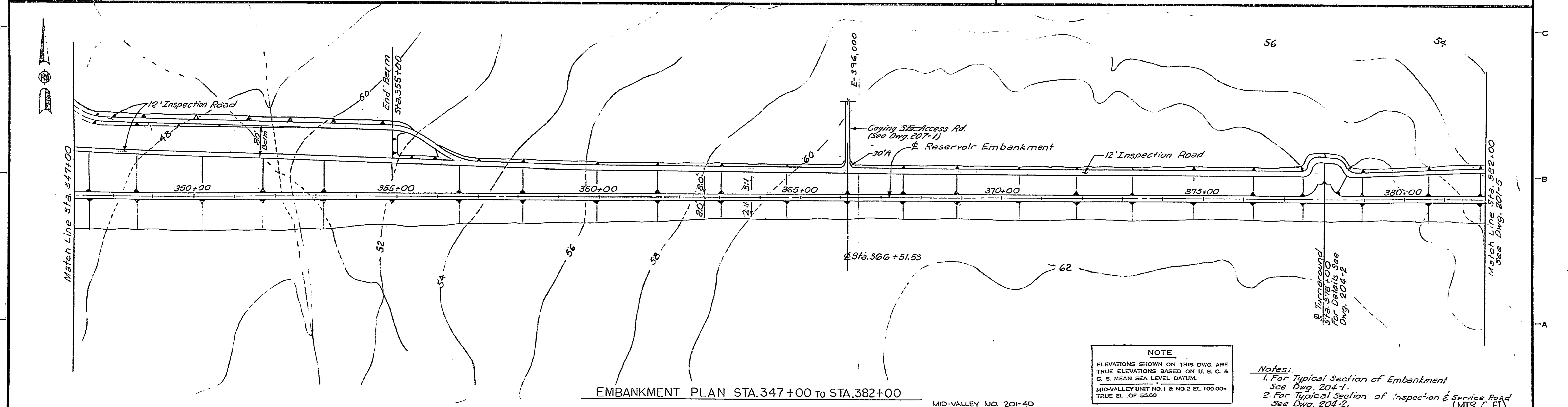
EMBankment PLAN STA. 284+00 to STA. 317+00



EMBankment PLAN STA. 317+00 to STA. 338+00



EMBankment PLAN STA. 338+00 to STA. 347+00



EMBankment PLAN STA. 347+00 to STA. 382+00

NOTE
 ELEVATIONS SHOWN ON THIS DWG. ARE TRUE ELEVATIONS BASED ON U. S. C. & G. S. MEAN SEA LEVEL DATUM.
 MID-VALLEY UNIT NO. 1 & NO. 2 EL. 100.00- TRUE EL. OF 95.00

Notes:
 1. For Typical Section of Embankment See Dwg. 204-1.
 2. For Typical Section of Inspection & Service Road See Dwg. 204-2.

NO.	DATE	REVISION
5	10-24-75	As Built
4	10-29-74	Added Drop Inlets & Rev. Berms
3	10-15-73	Corrected Sta. of Pipeline
2	3-1-73	Revised Ditch Inlet Elev., Monument #11, Turn-around, Gage Sta. & Access Road, Deleted Alt. B.

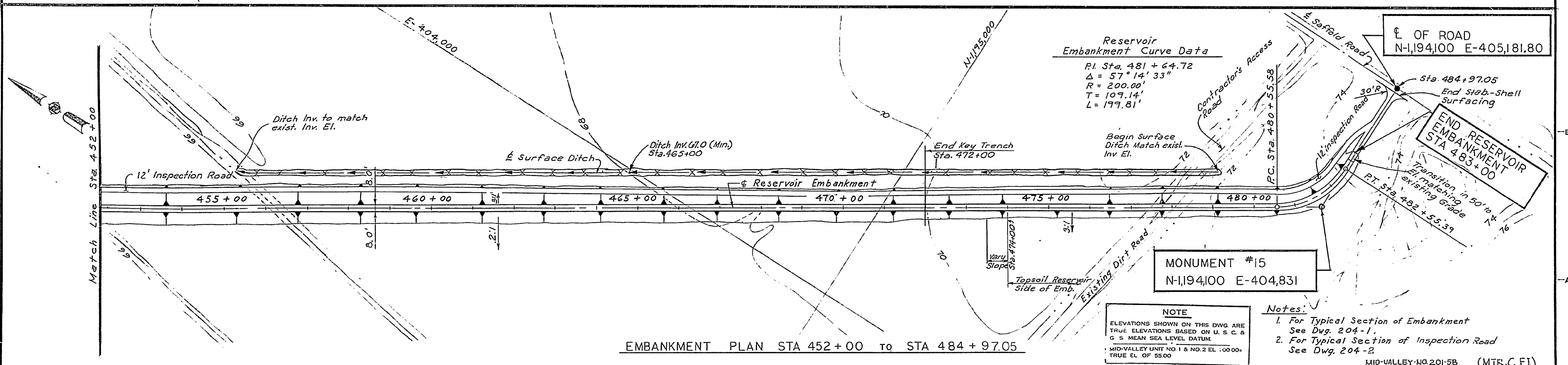
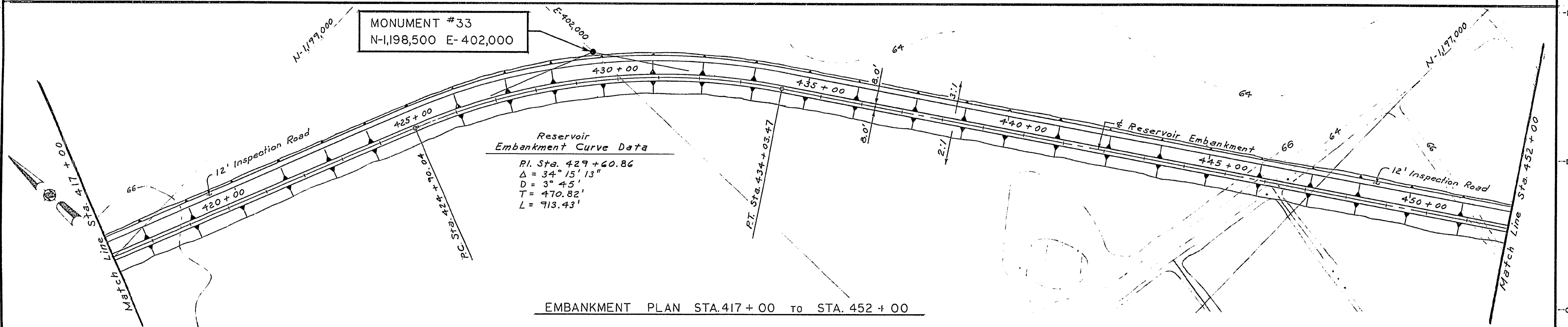
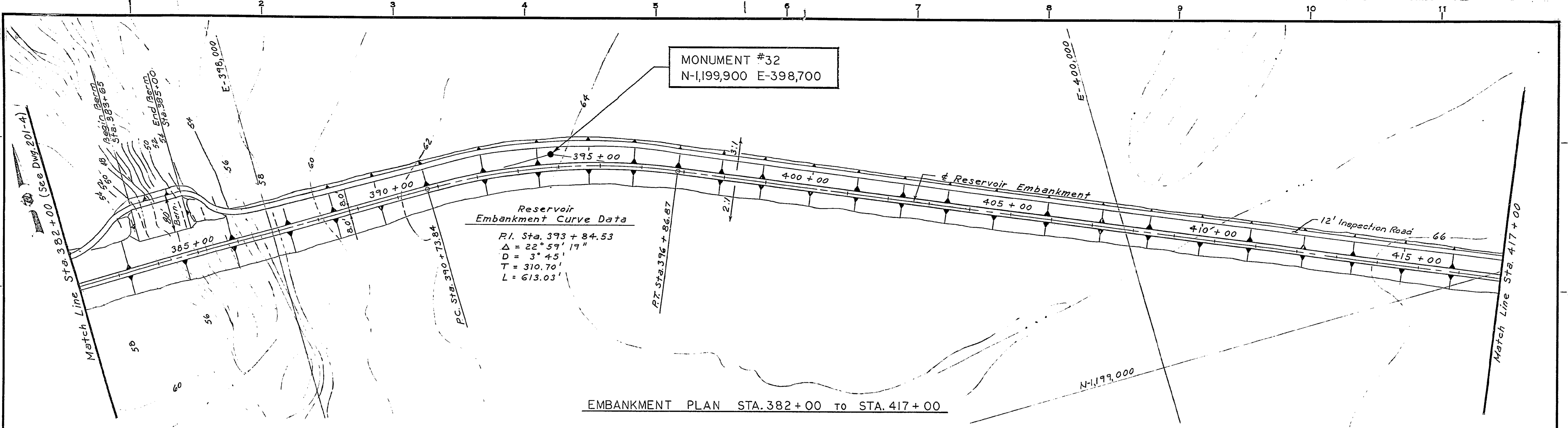
ASSIGNED FPM NO.	BY	CHK	COR	APP
FP4L REVISION	J. Demby	T.L. K.G.	K.G.	CF
DRAWN	CHECKED	APPROVED	DES	KOG
J. Demby	K. Gregory	Carl S. Dick	CF	CF
CUSTOMER APP.				

MID-VALLEY, INC.
 ENGINEERS - CONSTRUCTORS
 HOUSTON, TEXAS

FLORIDA POWER & LIGHT COMPANY
 MIAMI, FLORIDA
 MANATEE PLANT
 UNIT NO. 1-1975 862 MW INSTALLATION
 UNIT NO. 2-1976 862 MW INSTALLATION

DRAWING TITLE
 COOLING WATER RESERVOIR
 EMBANKMENT
 PLAN SHEET 4

CONTRACT NO. ER-0608
DATE: 11-9-72
SCALE: 1"=100'
0608-C-201-5
 SH-4



NO.	DATE	REVISION	BY	CHK.	COR.	APP.
3		ASSIGNED FP4L NO.				
B	10/24/75	As Built				
A	3/11/73	Deleted Alternate B, Rev. End Transition				

DRAWN	J. Demby
CHECKED	K. Gregory
APPROVED	<i>[Signature]</i>
CUSTOMER APP.	

MID-VALLEY, INC.
ENGINEERS - CONSTRUCTORS
HOUSTON, TEXAS

FLORIDA POWER & LIGHT COMPANY
 MIAMI, FLORIDA
 MANATEE PLANT
 UNIT NO. 1-1975 862 MW INSTALLATION
 UNIT NO. 2-1976 862 MW INSTALLATION

DRAWING TITLE	COOLING WATER RESERVOIR
	EMBAKMENT
	PLAN SHEET 5

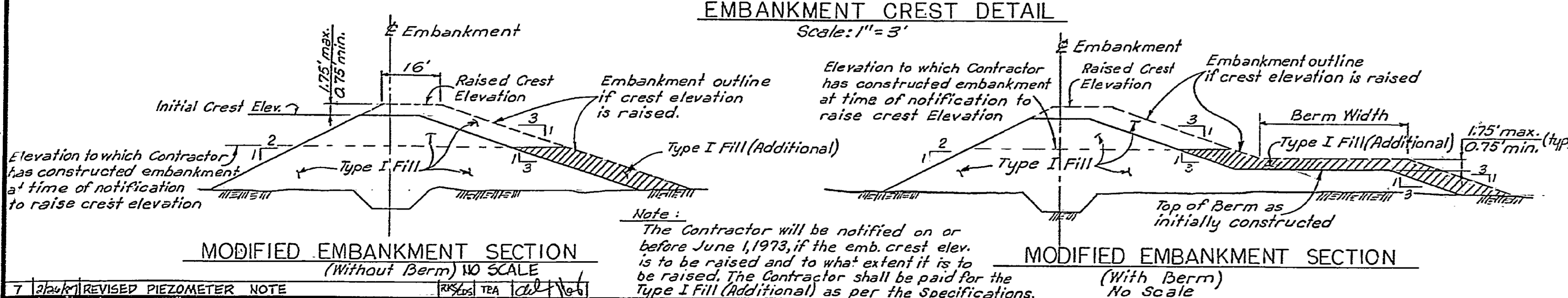
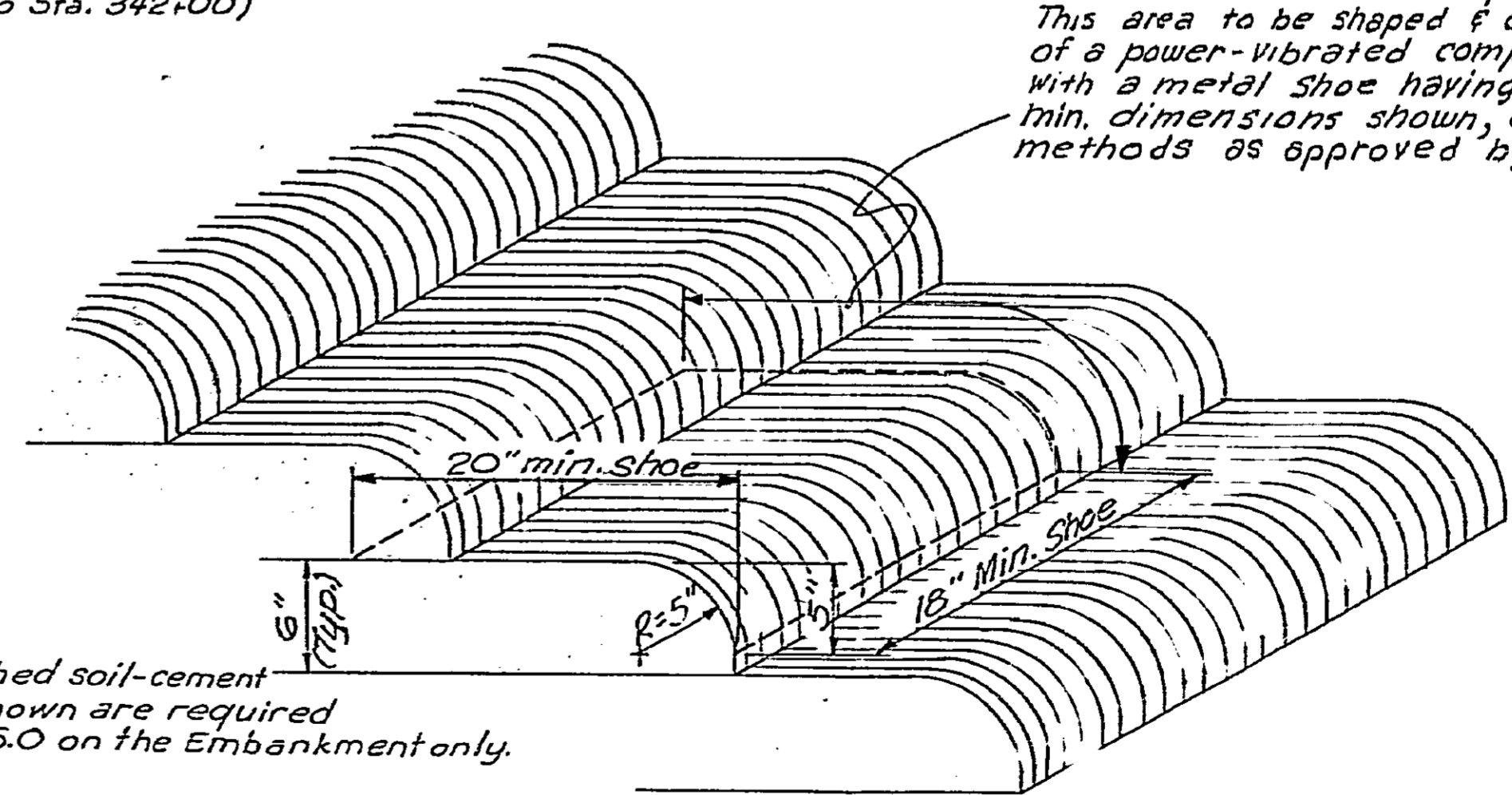
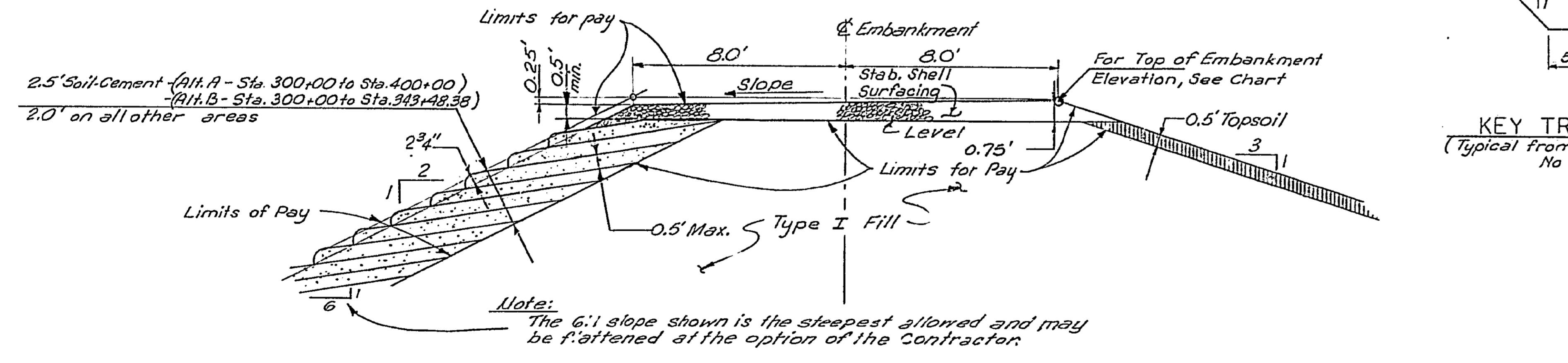
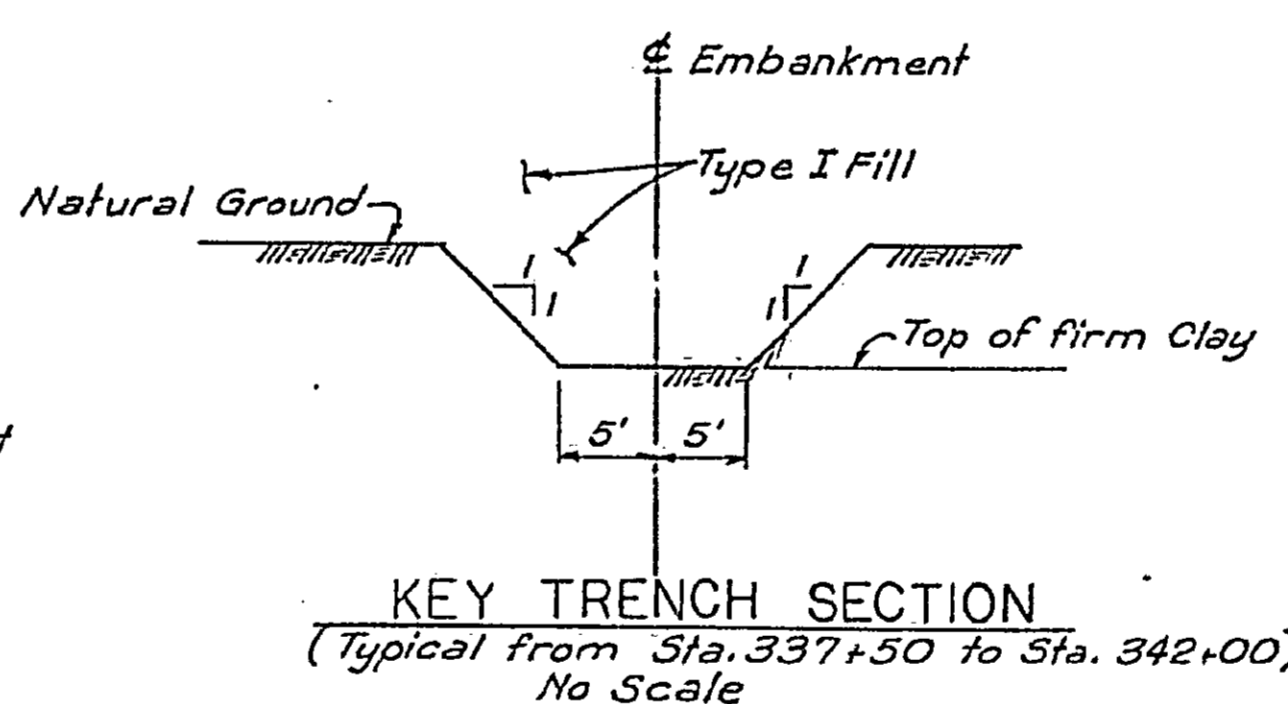
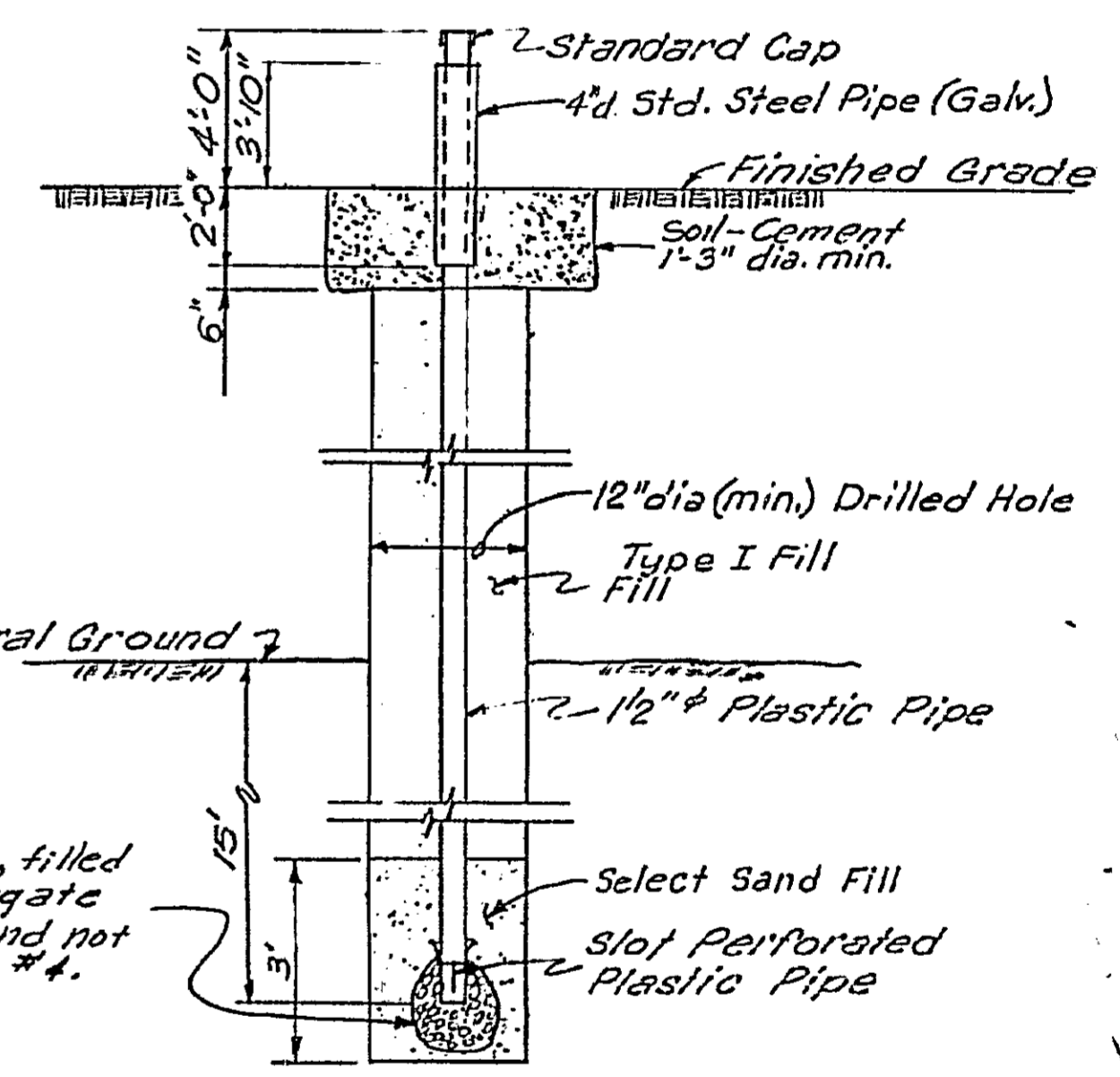
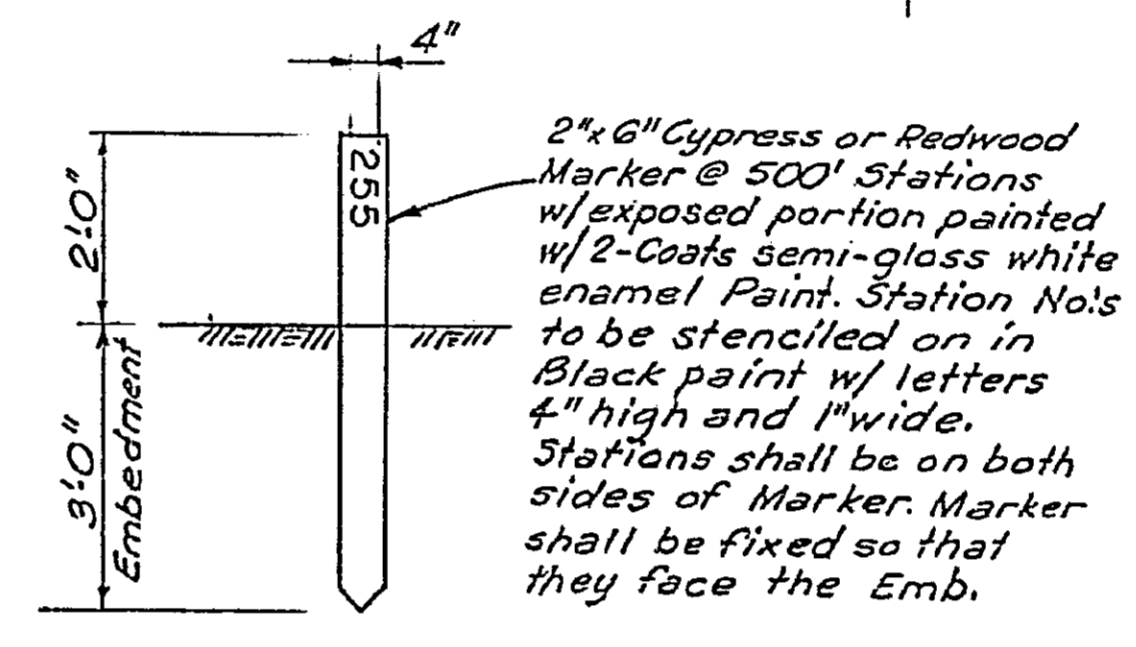
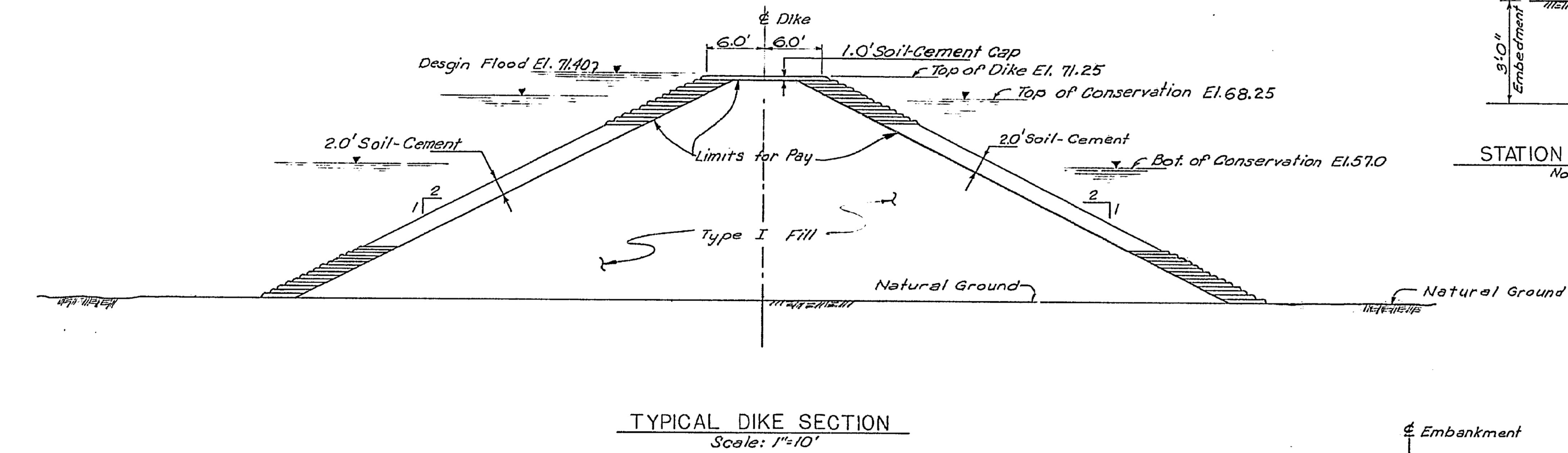
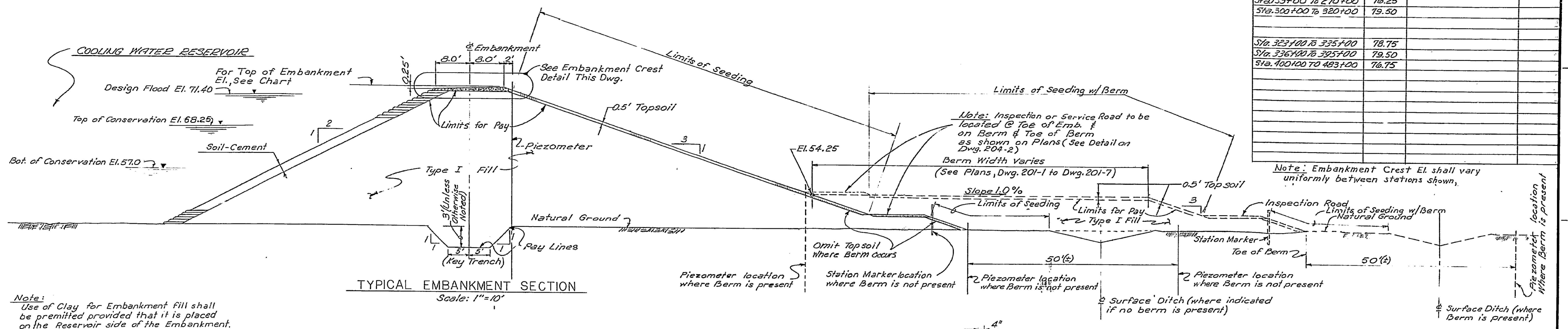
CONTRACT NO.	ER-0608
DATE	11-9-72
SCALE	1"=100'
	0608-C-20J-3
	SH-5

NOTE
 ELEVATIONS SHOWN ON THIS DWG ARE TRUE ELEVATIONS BASED ON U. S. C. & G. S. MEAN SEA LEVEL DATUM.
 MID-VALLEY UNIT NO. 1 & NO. 2 EL. ±00.00; TRUE EL. OF 55.00

Notes:
 1. For Typical Section of Embankment See Dwg. 204-1.
 2. For Typical Section of Inspection Road See Dwg. 204-2.

MID-VALLEY-NO.201-5B (MTR,C FI)

EMBANKMENT ELEV. CHART			
STATION	ELEV.	STATION	ELEV.
Sta. 1+50 To 144+00	76.25		
Sta. 147+00 To 158+00	77.75		
Sta. 159+00 To 270+00	76.25		
Sta. 300+00 To 320+00	79.50		
Sta. 323+00 To 325+00	78.75		
Sta. 336+00 To 325+00	79.50		
Sta. 400+00 To 483+00	76.75		



NOTE
ELEVATIONS SHOWN ON THIS DWG. ARE TRUE ELEVATIONS BASED ON U. S. C. & G. S. MEAN SEA LEVEL DATUM.
MID-VALLEY UNIT NO. 1 & NO. 2 EL. 100.00- TRUE EL. OF 55.00

GENERAL NOTE: (MTR, C, FI)
No Stripping shall be required except as directed in the Field by the Engineer.

NO.	DATE	REVISION	BY	CHK.	APP.
1	07-15-72	As Built	T.Z.	J.C.	J.F.
2	06-28-72	Added Note on Clay fill	K.G.	J.C.	J.F.
3	06-22-72	Key Trench Section	K.G.	J.C.	J.F.
4	3-1-72	Deleted Alternate 1's	J.E.S.	K.G.	J.F.
5	01-16-72	Revised Embankment El. Chart, Top of Conservation	K.G.	J.F.	J.F.
6	01-16-72	Add Modified Emb. Sections	K.G.	J.F.	J.F.

MID-VALLEY, INC.
ENGINEERS - CONSTRUCTORS
HOUSTON, TEXAS

FLORIDA POWER & LIGHT COMPANY
MIAMI, FLORIDA
MANATEE PLANT
UNIT NO. 1-1975 862 MW INSTALLATION
UNIT NO. 2-1976 862 MW INSTALLATION

DRAWING TITLE
COOLING WATER RESERVOIR
EMBANKMENT & DIKES
SECTIONS & DETAILS

CONTRACT NO. ER-0608
DATE: 11-9-72
SCALE: As Shown
REV 7

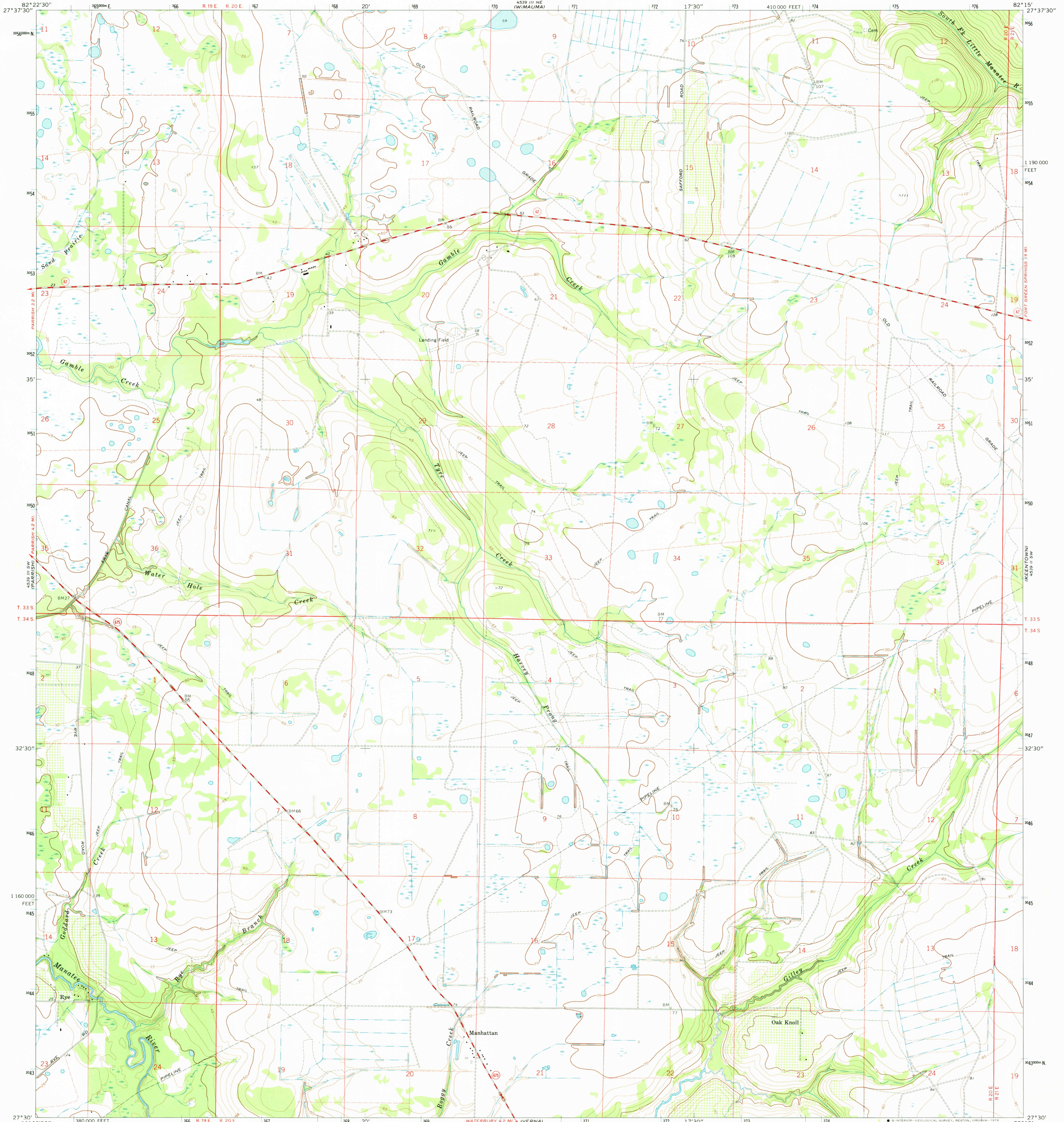
4539 III NE
WILKINSON

UNITED STATES
DEPARTMENT OF THE INTERIOR
GEOLOGICAL SURVEY

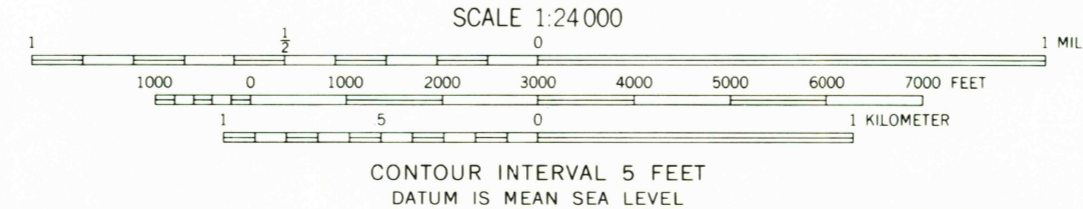
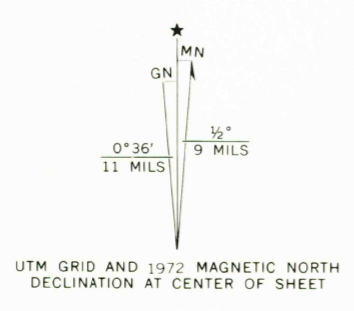
STATE OF FLORIDA

RYE QUADRANGLE
FLORIDA-MANATEE CO.
7.5 MINUTE SERIES (TOPOGRAPHIC)

4539 III NW
(FORT LONESOME)



Mapped, edited, and published by the Geological Survey
Control by USGS and USC&GS
Topography by photogrammetric methods from aerial photographs
taken December 1971. Field checked 1972.
Supersedes Army Map Service map dated 1944
Projection and 10,000-foot grid ticks: Florida coordinate system,
west zone (transverse Mercator)
1000-meter Universal Transverse Mercator grid ticks, zone 17,
shown in blue. 1927 North American datum
Fine red dashed lines indicate selected fence and field lines where
generally visible on aerial photographs. This information is unchecked



CONTOUR INTERVAL 5 FEET
DATUM IS MEAN SEA LEVEL



ROAD CLASSIFICATION

Primary highway, hard surface	Light-duty road, hard or improved surface
Secondary highway, hard surface	Unimproved road
Interstate Route	U. S. Route
	State Route

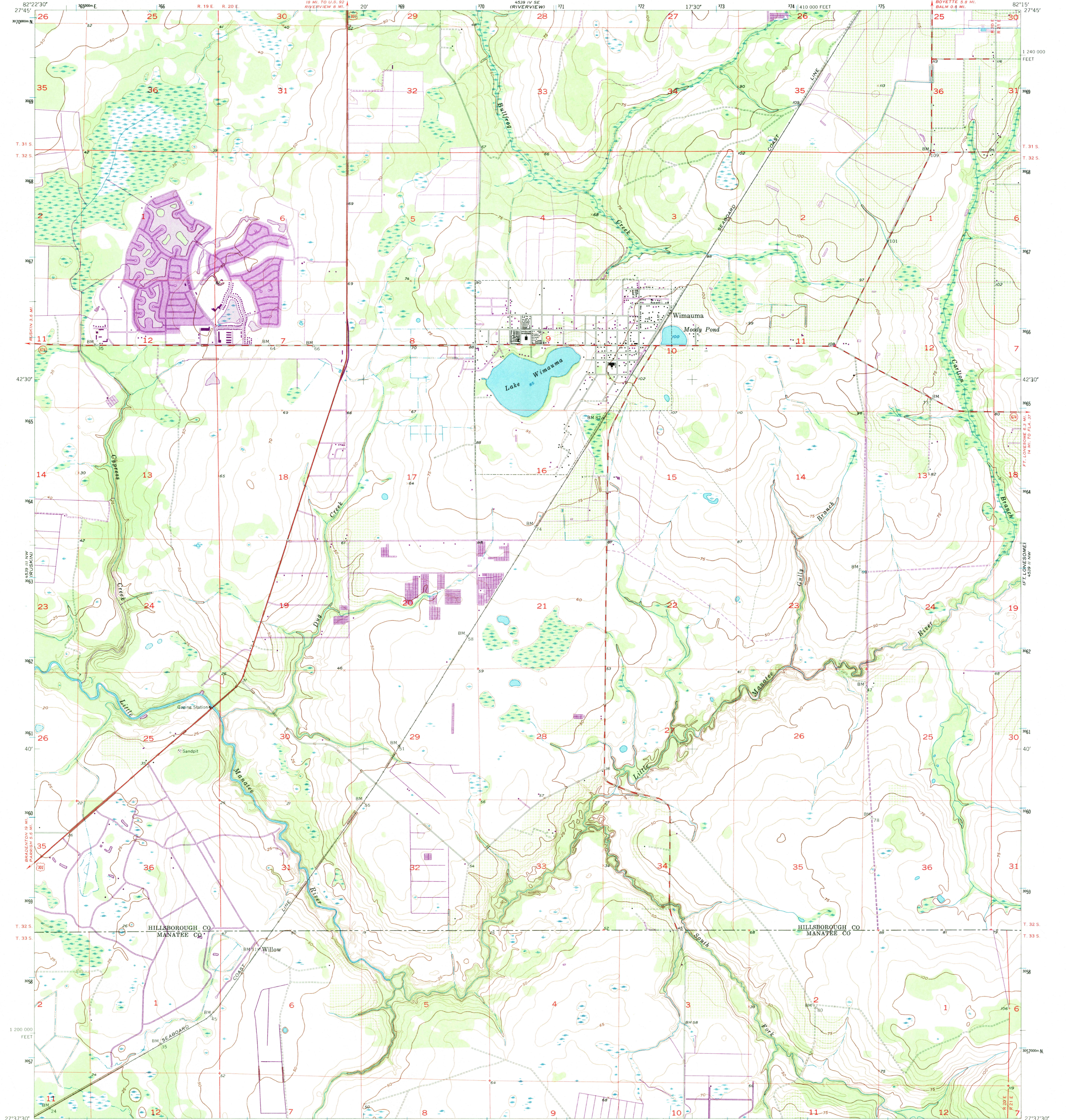
THIS MAP COMPLIES WITH NATIONAL MAP ACCURACY STANDARDS
FOR SALE BY U. S. GEOLOGICAL SURVEY, RESTON, VIRGINIA 22092
A FOLDER DESCRIBING TOPOGRAPHIC MAPS AND SYMBOLS IS AVAILABLE ON REQUEST

USGS
HISTORICAL FILE
TOPOGRAPHIC DIVISION

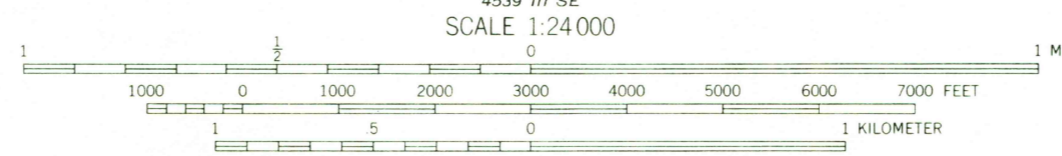
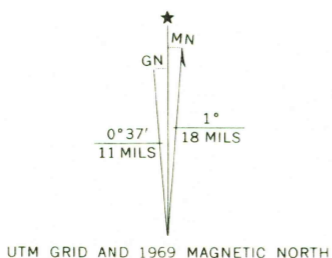
SEP 04 1974
RYE, FLA.
N2730-W8215/7.5
1972

AMS 4539 III SE-SERIES V847

MANATEE CITY NW
2650
50 pmi



Mapped, edited, and published by the Geological Survey
Control by USGS, USC&GS, and Florida Geodetic Survey
Culture and drainage in part compiled from aerial photographs
taken 1954. Topography by planetable surveys 1956
Supersedes Army Map Service map dated 1942
Polyconic projection. 1927 North American datum
10,000-foot grid based on Florida coordinate system, west zone
1000-meter Universal Transverse Mercator grid ticks,
zone 17, shown in blue
Revisions shown in purple compiled in cooperation with
State of Florida agencies from aerial photographs taken 1969
This information not field checked
Purple tint indicates extension of urban areas



CONTOUR INTERVAL 5 FEET
DATUM IS MEAN SEA LEVEL

THIS MAP COMPLIES WITH NATIONAL MAP ACCURACY STANDARDS
FOR SALE BY U. S. GEOLOGICAL SURVEY, WASHINGTON, D. C. 20242
A FOLDER DESCRIBING TOPOGRAPHIC MAPS AND SYMBOLS IS AVAILABLE ON REQUEST

USGS
Historical File
Topographic Division



U.S.G.S.
FILE COPY
TOPOGRAPHIC DIVISION

ROAD CLASSIFICATION

Heavy-duty	Light-duty
Medium-duty	Unimproved dirt
U. S. Route	State Route

WIMAUMA, FLA.
N2737.5-W8215/7.5
1956
PHOTOREVISED 1969
AMS 4539 III NE-SERIES V847

NOV 10 1970